

## VENUE



Prague, the capital of the Czech Republic, is a most valuable historical city reserve. In 1992, the historical core of the city covering 866 hectares was listed in the UNESCO World Cultural and Natural Heritage Register. Prague represents a unique collection of historical monuments dominated by the Prague Castle which towers high above the city. It is a display of all artistic styles and movements.

The historical core of the city is situated on both banks of the Vltava river and consists of 6 parts - formerly independent urban units unified in the 18th century: Stare Mesto (Old Town), Josefov (the preserved part of the former Jewish Town - today a part of the Old Town), Nove Mesto (New Town), Mala Strana (Lesser Town), Hradcany and Vysehrad. Naturally, most of the historical monuments, museums and galleries are concentrated right there. [Source: [www.praguewelcome.cz](http://www.praguewelcome.cz)]

**TST 2012 will take place at Kaiserstejnsky Palace** which is located in the Prague Lesser Town and has been hosting events for more than three centuries.

Its total reconstruction begins under the architects Zdeněk Pokorný and Jaroslav Bělský in 1977, and it was registered a UNESCO heritage site in 1981. Restitution procedures were completed and the palace returned to its original owners in 1997.

**Venue address:** **Kaiserstejnsky Palace**  
Malostranské náměstí 23/37, Prague 1  
110 00 Czech Republic  
[www.kaiserstejnskypalac.cz/Text/homepage?MenuItemId=2](http://www.kaiserstejnskypalac.cz/Text/homepage?MenuItemId=2)

## GETTING THERE

### BY PLANE

The Airport *Letiště Praha-Ruzyně* links Prague with about 130 destinations worldwide. It is served by approx. 50 airlines, among them also some budget airlines offering direct flights to Prague. The airport is located about 15 km away from the city centre and the meeting venue.

#### Directions to the venue/city centre:

- to the main railway station *Hlavní nádraží* and the city centre the most direct way is taking the *Airport Express* (travelling time: ~ 35 min.)
- alternatively: take the bus line 119 (direction *Dejvická*) and exit at the final stop
- from there take the metro line A (direction *Depo Hostivař*)
  - to get directly to the **venue**: exit at the stop *Malostranská* (walking time to the venue: ~ 10 min.)
  - to get to the **city centre**: exit at the stop *Muzeum*, situated about 2 km away from the main railway station
- further information on getting around is described on the next page in paragraph "by public transport"

#### Useful links:

- Destinations & airlines: [www.prg.aero/en/flight-info/destination-and-airlines/destinations](http://www.prg.aero/en/flight-info/destination-and-airlines/destinations)
- Plan the journey to your hotel (stations are indicated on the hotel list): [www.dpp.cz/en/](http://www.dpp.cz/en/)

### BY TRAIN

The main railway station *Hlavní Nádraží* is located in the heart of the city centre and is connected to a number of European cities.

#### From the main railway station *Hlavní nádraží* to the venue:

- take the tramway line 9 (direction *Sídlíště Řepy*)
- change at the stop *Újezd* into tramway line 12 (direction *Palmovka*) or 20 (direction *Divoká Šárka*) and exit at the stop *Malostranské náměstí*

You may also arrive at the centrally located station *Masarykovo nádraží* which is considered to be the oldest Railway Station of Prague.

#### From the railway station *Masarykovo nádraží* to the venue:

- take the tramway line 30 (direction: *Výstaviště*)
- change at the stop *Strossmayerovo náměstí* into line 12 (direction: *Sídlíště Barrandov*) and exit at the station *Malostranské náměstí*

Walking time to the venue: ~ 1 min.

#### Useful link:

- Journey planner: [www.dpp.cz/en](http://www.dpp.cz/en)

## GETTING THERE (continued)

### BY CAR

Prague can be reached by motorways and main roads from several European cities ([www.praguewelcome.cz/en/services/transportation/prague-by-car/road-distances-from-prague.shtml](http://www.praguewelcome.cz/en/services/transportation/prague-by-car/road-distances-from-prague.shtml)) and the major boarder crossings.

#### Important information:

- drivers need an international driving permit
- the international certificate of insurance “green card” is an obligation for entering the Czech Republic
- the car headlights have to be switched on also in day-time

- you have to purchase toll stickers and place them on the front window when driving all motorways and selected high speed routes
  - ⇒ the appropriate toll stickers can be purchased at border crossings, post offices or fuel stations

#### Useful links:

- Prague by car: [www.praguewelcome.cz/en/services/transportation/prague-by-car/basic-information.shtml](http://www.praguewelcome.cz/en/services/transportation/prague-by-car/basic-information.shtml)
- Toll system: [www.mytocz.cz/index.php?id=1521](http://www.mytocz.cz/index.php?id=1521)

## GETTING AROUND IN PRAGUE

### BY PUBLIC TRANSPORT

Prague offers a large and efficient public transportation network including bus, tram and metro linking.

#### Daily operating times:

- **Metro:** from 5 a.m. to 12 p.m. (on Fridays and Saturdays about one hour longer)  
During the rush hours a train is running every 2-3 min. and in off-peak hours every 4-10 min.
- **Trams & busses:** from 4:30 a.m. to midnight, on Fridays and Saturdays about one hour longer)

#### Useful links:

- More information & a journey planner (incl. fares) is available at the website of the operating company: [www.dpp.cz/en](http://www.dpp.cz/en)
- Network maps: [www.ropid.cz/info/maps\\_s219x901.html](http://www.ropid.cz/info/maps_s219x901.html)
- Overview of public transport: [www.praguewelcome.cz/en/services/transportation/public-mass-transit/basic-information.shtml](http://www.praguewelcome.cz/en/services/transportation/public-mass-transit/basic-information.shtml)

#### General information about Prague is available at:

- [www.praha.eu/jnp/en](http://www.praha.eu/jnp/en)
- [www.praguewelcome.cz/en](http://www.praguewelcome.cz/en)

### PRAGUE ON FOOT

Exploring the historic city centre of Prague which is listed in the UNESCO World Cultural and Natural Heritage Register since 1992 is definite a must.

The city centre offers a number of attractions, e.g. the Hradčany with Prague Castle and the Old Town including the Charles Bridge. The historic centre is moreover characterised by winding alleys and almost invites to a journey through the history of architectural styles with its inter alia Romanesque rotundas, Gothic cathedrals, Baroque and Renaissance palaces.

#### Useful link:

- Plan your trip through the city centre at: [www.praguewelcome.cz/srv/www/en/monuments/prague.x?form=](http://www.praguewelcome.cz/srv/www/en/monuments/prague.x?form=)

### BY TAXI

Prague has established the so-called “fair place taxi” stations that can be found throughout the city. Alternatively, you may call a taxi directly, e.g. at:

- AAA RADIOTAXI | Phone: +420 2 - 140 14
- Halotaxi | Phone: +420 244 114 411

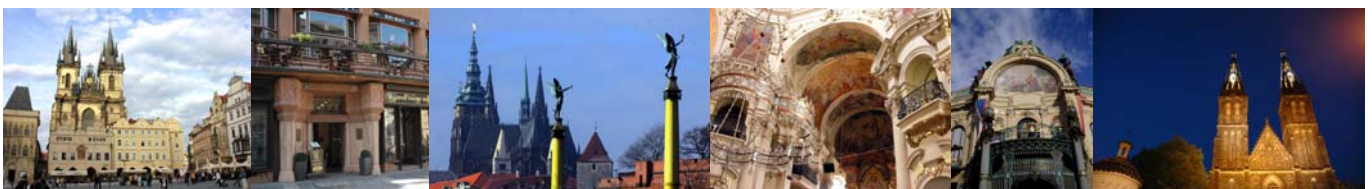
#### Further taxi companies:

[www.praguewelcome.cz/srv/www/en/addresses/list.x?keyIds=42802&pagedPlace=Praha](http://www.praguewelcome.cz/srv/www/en/addresses/list.x?keyIds=42802&pagedPlace=Praha)

## SIGHTSEEING PROPOSALS

Besides the 3rd EOS Topical Meeting on Terahertz Science & Technology, Prague has much to offer. If you decide to extend your stay to experience the touristic sides of the “Golden City” you may be interested in sightseeing recommendations. *Prague Information Services* has provided trips for a one-, two- and three-day visit to Prague that are available at the *Capital City of Prague Tourism Portal* ([www.praguewelcome.cz](http://www.praguewelcome.cz)).

- “Prague in a nutshell”: [www.praguewelcome.cz/en/visit/prague-fit-to-your-tastes/prague-in-a-nutshell/](http://www.praguewelcome.cz/en/visit/prague-fit-to-your-tastes/prague-in-a-nutshell/)



## HOTEL LIST

**Please note** that the room rates as well as the information on internet facilities (internet plugs, Wi-fi etc.) are taken from the homepages of the listed hotels.

Rates may vary from the prices listed below (e.g. during fairs or depending on the season) according to room availability and reservation date. Please contact the hotel directly to make your reservation.

**Hotel Malostranska Residence\*\*\*\***

Rates: from 114 Euro/night/person  
(breakfast: price not specified)

Address: Malostranské náměstí 24  
110 00 Prague 01 (CZ)

URL: [www.booking.com/hotel/cz/malostranska-24-palace-residence.html?la-bel=gog235jc;sid=138676551d51965958a67a1aa24a0261;dcid=1;dva=0&lang=en-gb](http://www.booking.com/hotel/cz/malostranska-24-palace-residence.html?la-bel=gog235jc;sid=138676551d51965958a67a1aa24a0261;dcid=1;dva=0&lang=en-gb)

Phone: +420 736 484 222

Internet: WiFi available

Distance to the meeting venue: 0.1 km

Station: Malostranské náměstí (tram: 12, 20, 22, 91)

**Hotel U Schnellů\*\*\***

Rates: 55 Euro/night/single room  
(breakfast incl.)

Address: Tomášská 2/21, 11800 Prague 1 -  
Malá Strana (CZ)

E-Mail: [uschnellu@centrum.cz](mailto:uschnellu@centrum.cz)

URL: [www.uschnellu.cz/en.html](http://www.uschnellu.cz/en.html)

Phone: +420 257 531 037

Fax: +420 257 532 038

Internet: Free Wi-fi in all rooms

Distance to the meeting venue: 0.1 km

Station: Malostranské náměstí (tram: 12, 20, 22, 91)

**The Charles Hotel\*\*\*\***

Rates: from 89 Euro/night/single room  
(breakfast incl.)

Address: Josefská 1, 118 00 Prague 1 -  
Malá Strana (CZ)

E-Mail: [reservation@hotel-charles.eu](mailto:reservation@hotel-charles.eu)

URL: [www.hotel-charles.cz/default.aspx](http://www.hotel-charles.cz/default.aspx)

Phone: +420 257 532 914

Fax: +420 257 532 910

Internet: Free Wi-fi available

Distance to the meeting venue: 0.25 km

Station: Malostranské náměstí (tram: 12, 20, 22, 91)

**Hotel Pod Věží\*\*\*\***

Rates: from 98 Euro/night/single room  
(breakfast incl.)

Address: Mostecká 58/2, 118 00 Praha 1 -  
Malá Strana (CZ)

Email: [hotel@podvezi.com](mailto:hotel@podvezi.com)

URL: <http://podvezi.com>

Phone: +420 257 532 041

Fax: +420 257 532 069

Internet: Wi-Fi available

Distance to the meeting venue: 0.25 km

Station: Malostranské náměstí (tram: 12, 20, 22, 91)

**Hotel Residence U černého orla\*\*\***

Rates: 119 Euro/night/person  
(breakfast incl.)

Address: Mostecká 11  
118 00 Praha 1 (CZ)

E-Mail: [reception@residenceprague.cz](mailto:reception@residenceprague.cz)

URL: [www.residenceprague.cz/index.php](http://www.residenceprague.cz/index.php)

Phone: +420 257 535 061

Fax: +420 257 535 066

Internet: not specified

Distance to the meeting venue: 0.3 km

Station: Malostranské náměstí (tram: 12, 20, 22, 91)

**Domus Balthasar Design Hotel\*\*\*\***

Rates: 180 Euro/night/person  
(breakfast incl.)

Address: Mostecká 5, Malá Strana -  
118 00 Prague 1 (CZ)

E-Mail: [balthasar@hidden-places.com](mailto:balthasar@hidden-places.com)

URL: [www.domus-balthasar.cz](http://www.domus-balthasar.cz)

Phone: +420 257 199 499

Fax: +420 257 199 490

Internet: Internet connection in all rooms

Distance to the meeting venue: 0.3 km

Station: Malostranské náměstí (tram: 12, 20, 22, 91)

**Best Western Premier Hotel Royal Palace Prague\*\*\*\*\***

Rates: 149 Euro/night/single room  
(breakfast incl.)

Address: Letenská 11  
Prague 1, 118 00 (CZ)

E-Mail: [hotel@hotelroyalpalace.cz](mailto:hotel@hotelroyalpalace.cz)

URL: [www.royalpalacehotel.cz/en/](http://www.royalpalacehotel.cz/en/)

Phone: +420 224 811 281

Fax: +420 224 811 287

Internet: Internet connection available

Distance to the meeting venue: 0.5 km

Station: Malostranská (Metro: A;  
Tram: 1, 8, 12, 18, 20, 22, 91)

## HOTELS LIST (continued)

**Hotel Three Storks (U Tří žápů)\*\*\*\*\***

Rates: from 79/Euro/night/single room  
(breakfast incl.)  
Address: Valdstejnske nam. 8  
11800 Praha 1 (CZ)  
E-Mail: [utricapu@avehotels.cz](mailto:utricapu@avehotels.cz)  
URL: [www.hotelthreestorks.cz/index.php](http://www.hotelthreestorks.cz/index.php)  
Phone: +420-2572 10779  
Fax: +420- 2572 12967  
Internet: Free Wi-fi available  
Distance to the meeting venue: 0.5 km  
Station: Malostranské náměstí (tram: 12, 20, 22, 91)

**Hotel Čertovka\*\*\*\***

Rates: from 124 Euro/night/single room  
(breakfast incl.)  
Address: U lužického semináře 85/2  
118 00 Praha-Malá Strana (CZ)  
E-Mail: [reservations@certovka.cz](mailto:reservations@certovka.cz)  
URL: [www.certovka.cz/?lang=en&1323869828](http://www.certovka.cz/?lang=en&1323869828)  
Phone: +420 257 011 500  
Fax: +420 257 534 392  
Internet: not specified  
Distance to the meeting venue: 0.9 km  
Station: Malostranská (tram: 1, 8, 12, 18, 20, 22, 91)

**Hotel Constans\*\*\*\***

Rates: from 75 Euro/night/single room  
(breakfast incl.)  
Address: Břetislavova 309  
118 00 Praha 1 - Malá Strana (CZ)  
E-Mail: [reservation@hotelconstans.cz](mailto:reservation@hotelconstans.cz)  
URL: [www.hotelconstans.cz/en](http://www.hotelconstans.cz/en)  
Phone: +420 234 091 818  
Fax: +420 234 091 860  
Internet: Wi-Fi available  
Distance to the meeting venue: 1.3 km  
Station: Malostranské náměstí (tram: 12, 20, 22, 91)

**Aparthotel City 5\*\*\***

Rates: 65 Euro/night/person/studio  
(breakfast: CZK 100/day (4 Euro/day))  
Address: Vltavská 11/667  
150 00 Praha 5 - Smíchov (CZ)  
E-Mail: [office@appartamento.cz](mailto:office@appartamento.cz)  
URL: [www.aparthotelprague.com](http://www.aparthotelprague.com)  
Phone: +420 602 495 529  
Fax: +420 257 217 066  
Internet: Free Wi-fi available  
Distance to the meeting venue: ~ 3.5 km  
Station: Na Knížecí (Tram: 6, 12, 14, 20)

**Hotel Arcadia Old Town\*\*\***

Rates: 75 Euro/night/single studio  
(breakfast incl.)  
Address: Hostivítova 3  
128 00 Prague 2 (CZ)  
E-Mail: [info@arcadiaresidence.com](mailto:info@arcadiaresidence.com)  
URL: [www.arcadiaresidence.com/?lang=en](http://www.arcadiaresidence.com/?lang=en)  
Phone: +420 2249 22040  
Fax: +420 2249 22042  
Internet: Internet connection available  
Distance to the meeting venue: ~ 4 km  
Station: Albertov (tram: 7, 18, 24)  
Important: To stay close to the venue: please indicate that you would like to book a room at the Arcadia Old Town in the centre and not in the Arcadia Residence situated outside the centre.

⇒ An extensive overview of hotels arranged by category is available at: [www.praguewelcome.cz/en/services/accommodation.shtml](http://www.praguewelcome.cz/en/services/accommodation.shtml)

## HOSTELS

**Charles Bridge Economic Hostel**

Rates: from 24 Euro/night/Deluxe 3 bed  
(breakfast: not specified)  
Address: Mostecka 4/53, 118 00 Praha 1 -  
Mala Strana (CZ)  
Contact form: [www.charlesbridgehostel.cz/contactform](http://www.charlesbridgehostel.cz/contactform)  
URL: [www.charlesbridgehostel.cz](http://www.charlesbridgehostel.cz)  
Phone: +420 257 213 420  
Internet: Wi-Fi available  
Distance to the meeting venue: 0.3 km  
Station: Malostranské náměstí (tram: 12, 20, 22, 91)

**Little Town Budget Hostel**

Rates: 68 Euro/night/single room  
(breakfast: 6 Euro/day )  
Address: Malostranske namesti 11/260  
118 00 Prague 1 (CZ)  
E-Mail: [info@littletownhotel.cz](mailto:info@littletownhotel.cz)  
URL: [www.littletownhotel.cz](http://www.littletownhotel.cz)  
Phone: +420 242 406-964/-965  
Fax: +420 255 729 689  
Internet: Free Wi-Fi available  
Distance to the meeting venue: 0.4 km  
Station: Malostranské náměstí (tram: 12, 20, 22, 91)

⇒ Further hostels are available at: [www.hostelworld.com](http://www.hostelworld.com)